



The Linealux L5 is a high power architectural grade luminaire that combines technology and performance in a stylish linear form factor. Available in white, colour changing and tunable white light engines, the Linealux L5 is packed with features including EasyGlow™ visual comfort and CoolDrive™ thermal management technologies. PowerSync™ allows for highly granular digital control via common protocols. Unique and flexible optics allow wide end-to-end spacing whilst maintaining excellent uniformity. Lighting professionals now have greater creative flexibility with the choice of designer\* and standard LED options.

\* Reduces colour-over-angle separation, fewer striations in the beam and shorter blending distances.

### Performance

Static White & Colour	Lumen Output (lm)	Efficacy (lm/W)	Peak Intensity (cd)
● 2,700 K (80 CRI)	8,276	79.4	171,060
● 3,000 K (80 CRI)	8,315	81.5	172,669
○ 3,500 K (80 CRI)	9,054	90.7	188,017
● 4,000 K (80 CRI)	9,503	92.7	195,039
● 5,000 K (70 CRI)	9,854	96.6	198,940
● Red	3,417	63.2	117,933
● Green	6,186	62.3	210,476
● Blue	2,143	19.8	73,460

Static white lumen output values are based on 22W/ft, 4ft luminaire with 10° standard lens.  
Single colour lumen output values are based on 22W/ft, 4ft luminaire with 6° designer lens.

Dynamic Colour	Lumen Output (lm)	Efficacy (lm/W)	Peak Intensity (cd)
● RGBA	3,970	42.1	108,054
● RGBW	4,619	47.1	116,730
● RGBW - Royal Blue	-	-	-

Dynamic colour lumen output values based on 22W/ft, 4 ft luminaire with 6° designer lens.

Tunable White	Lumen Output (lm)	Efficacy (lm/W)	Peak Intensity (cd)
● 2,700 K - 6,500 K	6,310 (4,430 K)	61.1	28,771

Tunable white lumen output values based on 22W/ft, 4ft luminaire with 6° designer lens with all channels at 100%.

**Quickship**  
Quickship Configurations  
Available

powersync™

easyglow™

cooldrive™



## Performance

Beam Angles	Light Engine	Series	Beam Angles
	Static White & Single Colour	Standard	10°, 15°, 30°, 45°, 40° x 10°, 40° x 20°, 60° x 20°
		Designer <sup>(1)</sup>	6°, 15°, 30°, 45°, 60°, 60° x 10°, 40° x 10°, 40° x 20°, 60° x 20°
	Dynamic Colour	Designer <sup>(1)</sup>	6°, 15°, 30°, 45°, 60°, 60° x 10°, 40° x 10°, 40° x 20°, 60° x 20°
	Tunable White	Designer <sup>(1)</sup>	6°, 15°, 30°, 45°, 60°, 60° x 10°, 40° x 10°, 40° x 20°, 60° x 20°

(1) Significantly reduces colour-over-angle separation, fewer striations in the beam and shorter blending distances.

## Electrical

LED Power	15W/ft, 22W/ft
Consumption	18W/ft, 25W/ft maximum
Lifetime (L70)	>60,000hrs (B10, L70, TM21)
Input Voltage	120-277V, 50/60Hz
Earth Leakage	120V - 0.3mA, 240V - 0.4mA, 277V - 0.6mA
Thermal Management	CoolDrive™ onboard thermal monitoring and control.

## Control

Interface	Lumascap PowerSync™
Protocols	DMX/RDM, Artnet, PWM <sup>(1)</sup> , 0-10V (sink or source) <sup>(1)</sup> Some protocols require additional hardware. For details and for other available protocols contact factory. 1. Not available for Colour Changing
PWM Frequency	2,000Hz flicker free dimming to 0.1%
Systems	Range of third-party controllers

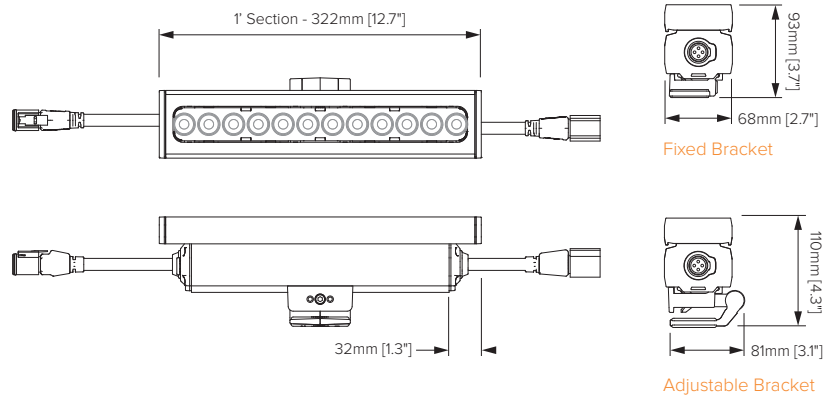
## Physical

Housing	Die cast marine grade aluminum, tempered glass lens, isolated stainless steel fasteners, constant torque adjustable mounting bracket (lockable and reversible)
Finish	Superior 9-step powder-coating process, including marine epoxy undercoat and polyester top coat.
Installation	Surface-mounted with galvanic isolator
Adjustable	Multi-positional, constant torque locking hinges
Ambient Operating Temperature	-40°C to 50°C (-40°F to 122°F)
Surface Temperature	≤50°C (122°F)   22 W/ft
Weight	4' section - 6.7kg (14.8lb)

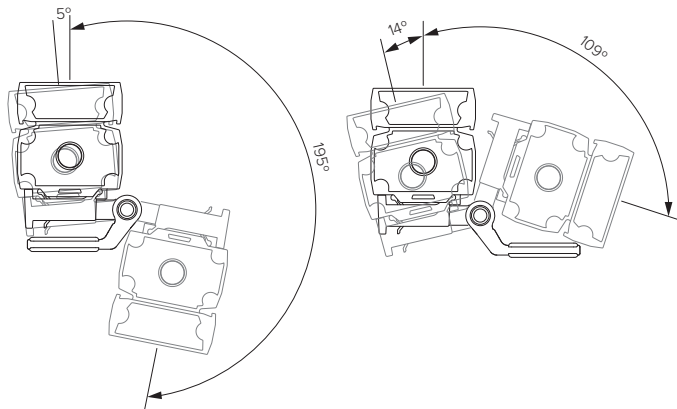
## Certification &amp; Compliance

IP Rating	IP66 / IP67
IK Rating	IK6
Vibration Resistance	3G Rating (ANSI C136.31)
Environment	Dry, Damp, Wet locations
Certifications	ETL, CE, RCM, CCC

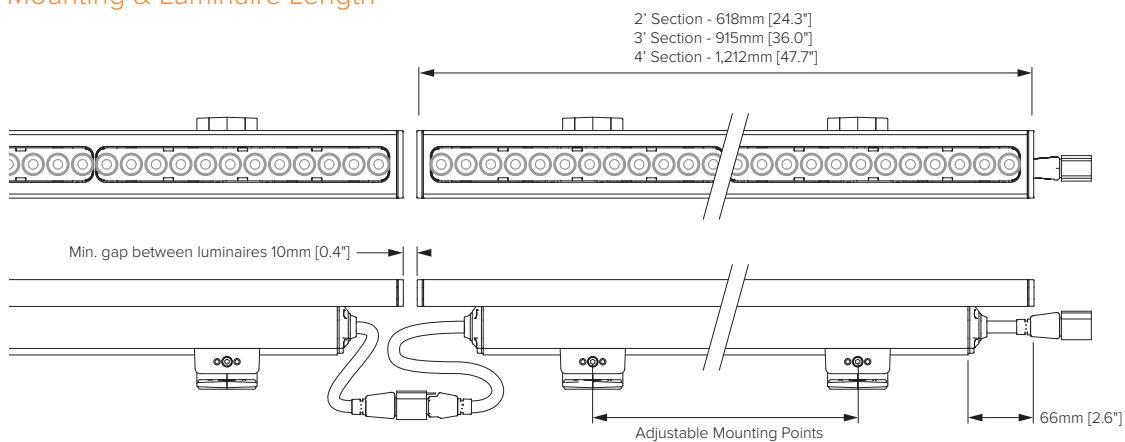
## Luminaire Dimensions



## Luminaire Rotation



## Mounting & Luminaire Length





= Quickship Available Option\*

\*Only Available in North America

Power	Code
15W/ft	15
22W/ft	22

Series	Code
Designer	D
Standard	S

Static White & Colour	Code
2,700 K (80 CRI)	827
3,000 K (80 CRI)	830
3,500 K (80 CRI)	835
4,000 K (80 CRI)	840
5,000 K (70 CRI)	750
Red	RED
Green	GRN
Blue	BLU

Dynamic Colour	Code
RGBA	4CA
RGBW	4CW
RGBW - Royal Blue	4BW

(1) Available on request

Tunable White	Code
2,700 K - 6,500 K	2WT

Connection Type	Code
Flexible cable, single entry, for hard wired installations	84
Flexible cable, double entry, for hard wired installations	83
Flexible cable, single entry, for connectorised installations	77
Flexible cable, double entry, for connectorised installations	73
Hookup wire and 1/2" NPT, single entry, for hard wired installations	82 <sup>(1)</sup>
Hookup wire and 1/2" NPT, double entry, for hard wired installations	86 <sup>(1)</sup>

(1) North American market only  
For other cable entry options contact factory.

Input Voltage	Code
110-240V, 50/60Hz	01 <sup>(1)</sup>
120-277V, 50/60Hz	09 <sup>(2)</sup>

(1) International market  
(2) North American market

Control	Code
Non-Dim	ND <sup>(1)</sup>
Powersync™	PS <sup>(2)</sup>

(1) For single colour, non-dimming applications only.  
(2) Required for all dimming and colour changing applications. LS6540 Data Injector required - order separately

Finish	Code
Black	BL
Anthracite Grey	AG
Basalt Grey	BT
Anodic Silver	SL
White	WT
Dark Bronze	DB
Latte	LT
Dark Aluminum	DA
Custom RAL	CC <sup>(1)</sup>

(1) Please provide RAL colour.

Luminaire Gap	Code
End-To-End (ETE)	000 <sup>(1)</sup>
0.3m (1') Gap	001
0.6m (2') Gap	002
0.9m (3') Gap	003
1.8m (6') Gap	006

(1) Default - Minimum length for ETE connection.

Length	Code
1' - 322mm (12.7")	1
2' - 618mm (24.3")	2
3' - 915mm (36.0")	3
4' - 1,212mm (47.7")	4

Mounting	Code
Adjustable Bracket	A
Fixed Bracket	B

**Beam Orientations**  
Beam Orientation for the "LH", "NH", "MH", "WH" and "WF" optical system

### Shielding & Glare Control

A variety of shielding and glare control options are available for the Linealux L5 Series. The images below depict the one foot version of the luminaire but glare control accessories are available from 1ft to 4ft in length to suit any base luminaires.

Visor Length	Code	Finish	Code
External Shield / Visor 1-sided - 1'	LS6213	Black	BL
External Shield / Visor 1-sided - 2'	LS6214	Anthracite Grey	AG
External Shield / Visor 1-sided - 3'	LS6215	Basalt Grey	BT
External Shield / Visor 1-sided - 4'	LS6216	Anodic Silver	SL
		White	WT
		Dark Bronze	DB
		Latte	LT
		Dark Aluminum	DA
		Custom RAL	CC <sup>(1)</sup>

(1) Please provide RAL colour.

External Shield / Visor 1-sided



Visor Length	Code	Finish	Code
External Shield / Visor 3-sided - 1'	LS6217	Black	BL
External Shield / Visor 3-sided - 2'	LS6218	Anthracite Grey	AG
External Shield / Visor 3-sided - 3'	LS6219	Basalt Grey	BT
External Shield / Visor 3-sided - 4'	LS6220	Anodic Silver	SL
		White	WT
		Dark Bronze	DB
		Latte	LT
		Dark Aluminum	DA
		Custom RAL	CC <sup>(1)</sup>

(1) Please provide RAL colour.

External Shield / Visor 3-sided



Louvre Length	Code	Finish	Code
External / Slatted Louvre - 1'	LS6209	Black	BL
External / Slatted Louvre - 2'	LS6210	Anthracite Grey	AG
External / Slatted Louvre - 3'	LS6211	Basalt Grey	BT
External / Slatted Louvre - 4'	LS6212	Anodic Silver	SL
		White	WT
		Dark Bronze	DB
		Latte	LT
		Dark Aluminum	DA
		Custom RAL	CC <sup>(1)</sup>

(1) Please provide RAL colour.

External / Slatted Louvre

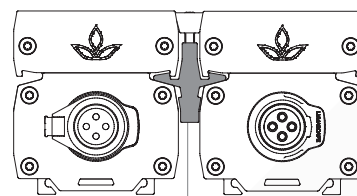


**LS6147 Link Key**

Lighting designers and architects can take advantage of the Lumascape Link Key to interconnect two or more L5 luminaires. Therefore it has never been easier to double, triple or even quadruple the lumen output for an application.



Side View



LS6147 Link Key

**Clean Installation**

Luminaires joined with a Link Key can be daisy chained with one cable and individually controlled via Lumascape PowerSync™.

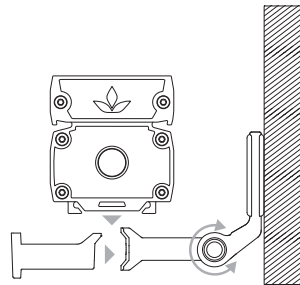


### Reversible Mounting Bracket

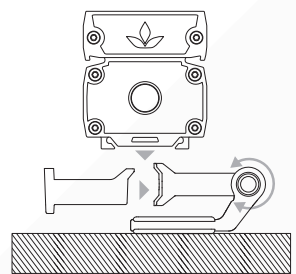
The Linealux L5 series comes with adjustable and reversible, constant torque mounting bracket. This allows for the luminaire to be mounted to virtually any position. A wide variety of mounting accessories is also available for the Linealux L5 series.



Vertical Mounting

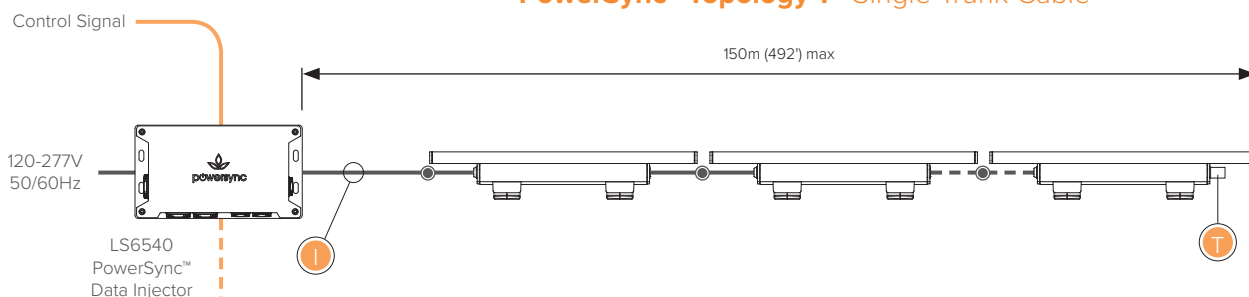


Horizontal Mounting

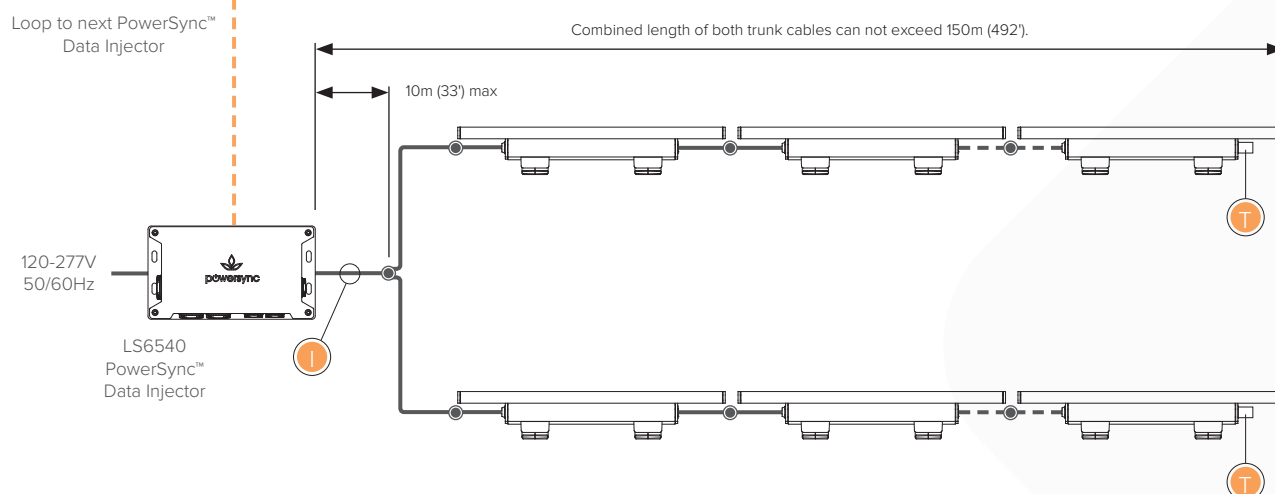


## Network Topology - PowerSync™ Dimmable

## PowerSync™ Topology 1 - Single Trunk Cable



## PowerSync™ Topology 2 - Split Trunk Cable



## Up to 45 luminaires per run under the following conditions:

- Max total cable run length 150m (492') in up to two trunk cables
- For run lengths in excess of 30m (100'), the *data* wire gauge cannot exceed 14 AWG (2.5mm<sup>2</sup>)
- For run lengths up to 30m (100'), the *data* wire gauge is not governed
- Refer to 'Maximum Circuit Load' table for circuit limitations
- Always observe local electrical codes for branch circuit current limitations

## Maximum Circuit Load

Maximum Number of Interconnected Fixtures							
Luminaire Length	LED Power	120V		240V		277V	
		12.8A	16A	12.8A	16A	12.8A	16A
1ft	15W	45	45	45	45	45	45
	22W	41	45	45	45	45	45
2ft	15W	40	45	45	45	45	45
	22W	28	38	45	45	45	45
3ft	15W	26	35	45	45	45	45
	22W	19	25	38	45	44	45
4ft	15W	20	26	40	45	45	45
	22W	14	19	28	38	33	44

Refer to PowerSync™ installation manual for maximum distance information and typology options.

All connectorised options in North America are limited to 12.8A branch circuit load.

For non-continuous runs contact factory for details.

**T Terminator**

Use PowerSync™ terminator, supplied with leader cable to terminate last luminaire in chain.

**I Maximum Current**

≤16.0A through cables and connectors supplied by Lumascape  
≤12.8A applies to connectorised installations in North America

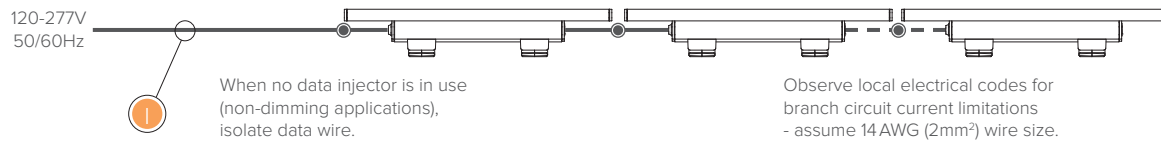
**● Connection Type**

Circuits can be configured as either connectorised or hardwired. For details consult installation instructions and comply with local electrical codes.

NOTE: The above diagrams are intended to show electrical pathways between luminaires and ancillary device. These diagrams are not intended to show type or colour of cord / wire, luminaire input voltage rating, wire gauge or approved use of the cord / wire supplied with luminaires.



## Network Topology - Non-Dimmable



### Up to 45 luminaires per run under the following conditions:

- Refer to 'Maximum Circuit Load' table for circuit limitations
- Always observe local electrical codes for branch circuit current limitations



#### Maximum Current

≤16.0A through cables and connectors supplied by Lumascape  
≤12.8A applies to connectorised installations in North America



#### Connection Type

Circuits can be configured as either connectorised or hardwired. For details consult installation instructions and comply with local electrical codes.

## Maximum Circuit Load

Maximum Number of Interconnected Fixtures							
Luminaire Length	LED Power	120V		240V		277V	
		12.8A	16A	12.8A	16A	12.8A	16A
1ft	15W	45	45	45	45	45	45
	22W	41	45	45	45	45	45
2ft	15W	40	45	45	45	45	45
	22W	28	38	45	45	45	45
3ft	15W	26	35	45	45	45	45
	22W	19	25	38	45	44	45
4ft	15W	20	26	40	45	45	45
	22W	14	19	28	38	33	44

Refer to PowerSync™ installation manual for maximum distance information and typology options.

All connectorised options in North America are limited to 12.8A branch circuit load.

For non-continuous runs contact factory for details.

NOTE: The above diagrams are intended to show electrical pathways between luminaires and ancillary device. These diagrams are not intended to show type or colour of cord / wire, luminaire input voltage rating, wire gauge or approved use of the cord / wire supplied with luminaires.

**powersync™**

## Connectorised Accessories

### Cables & Connectors (Connection Type 73 / 77 Only)

Leader & Jumper Cables (1.5mm <sup>2</sup> ) - International Market	Code
Leader Cable 10m [32'] (4 x 1.5mm <sup>2</sup> )	LS6402C-032
Leader Cable custom length in feet - 30m [98'] max. (4 x 1.5mm <sup>2</sup> )	LS6402C-xxx
Jumper Cable 0.3m [1'] fixture gap spacing (4 x 1.5mm <sup>2</sup> )	LS6404C-001
Jumper Cable 0.6m [2'] fixture gap spacing (4 x 1.5mm <sup>2</sup> )	LS6404C-002
Jumper Cable 1.2m [4'] fixture gap spacing (4 x 1.5mm <sup>2</sup> )	LS6404C-004
Jumper Cable 3m [10'] fixture gap spacing (4 x 1.5mm <sup>2</sup> )	LS6404C-010
Jumper Cable custom fixture gap spacing in feet - 30m [98'] max. (4 x 1.5mm <sup>2</sup> )	LS6404C-xxx

Leader & Jumper Cables (2.5mm <sup>2</sup> ) - International Market	Code
Leader Cable 10m [32'] (4 x 2.5mm <sup>2</sup> )	LS6402C-2.5-032
Leader Cable custom length in feet - 30m [98'] max. (4 x 2.5mm <sup>2</sup> )	LS6402C-2.5-xxx
Jumper Cable 0.3m [1'] fixture gap spacing (4 x 2.5mm <sup>2</sup> )	LS6404C-2.5-001
Jumper Cable 0.6m [2'] fixture gap spacing (4 x 2.5mm <sup>2</sup> )	LS6404C-2.5-002
Jumper Cable 1.2m [4'] fixture gap spacing (4 x 2.5mm <sup>2</sup> )	LS6404C-2.5-004
Jumper Cable 3m [10'] fixture gap spacing (4 x 2.5mm <sup>2</sup> )	LS6404C-2.5-010
Jumper Cable custom fixture gap spacing in feet - 30m [98'] max. (4 x 2.5mm <sup>2</sup> )	LS6404C-2.5-xxx

Leader & Jumper Cables - North America Market	Code
Leader Cable 10m [32'] (4 x 14AWG)	LS6402U-032
Leader Cable 8m [26'] (4 x 14AWG)	LS6402U-026
Leader Cable 15m [50'] (4 x 14AWG)	LS6402U-050
Leader Cable specify custom length in feet - 30m [98'] max. (4 x 14AWG)	LS6402U-xxx
Jumper Cable 0.3m [1'] fixture gap spacing (4 x 14AWG)	LS6404U-001
Jumper Cable 0.6m [2'] fixture gap spacing (4 x 14AWG)	LS6404U-002
Jumper Cable 1.2m [4'] fixture gap spacing (4 x 14AWG)	LS6404U-004
Jumper Cable 3m [10'] fixture gap spacing (4 x 14AWG)	LS6404U-010
Jumper Cable specify custom fixture gap spacing in feet - 30m [100'] max. (4 x 14AWG)	LS6404U-xxx

All connectorised options in North America are limited to 12.8 A branch circuit load.

Terminator	Code
DMX Terminator Hardwired (CCC, CE, UL)	LS6407
PowerSync™ Terminator Hardwired, Mains / Low Voltage (CCC, CE)	LS6406-01
PowerSync™ Terminator Hardwired, Mains / Low Voltage (UL)	LS6406-09
PowerSync™ Terminator Connectorised, Mains Voltage (CCC, CE, UL)	LS6417

Note: A terminator ships with every leader cable. Order separately for spare parts and split runs only.

PowerSync™ Splitters	Code
PowerSync™ Y - Connector (4 x 1.5mm <sup>2</sup> ), Mains Voltage (CCC, CE)	LS6425C
PowerSync™ Y - Connector (4 x 2.5mm <sup>2</sup> ), Mains Voltage (CCC, CE)	LS6425C-2.5
PowerSync™ Y - Connector (4 x 14AWG), Mains Voltage (UL)	LS6425U

## Wire Colours & Designations

### Mains Voltage - International Market

Designation	Colour
Active	Brown
Neutral	Blue
Earth	Green / Yellow
Data	Black



### Mains Voltage - North American Market

Designation	Colour
Active	Black
Neutral	White
Earth	Green / Yellow
Data	Grey [or Red]

